

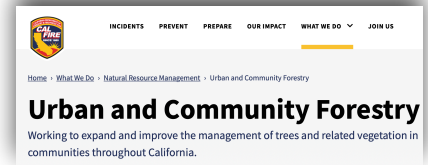
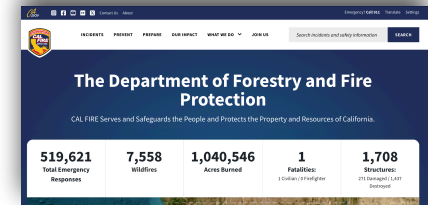
CASP: California's Strategic Plan to increase canopy

Addressing AB 2251



History of Urban Forestry Legislation

- California Natural Resources Agency
 - Department of Forestry and Fire Protection (CalFire)
- California Urban Forestry Act of 1978
 - defined urban forests
 - directed CalFire to implement an urban forestry program
 - Walter Passmore - State Urban Forester



California Forest Carbon Plan 2018

- Protect the existing tree canopy through policies and programs targeting ongoing maintenance and utilization of industry best management practices.
- Increase total urban tree canopy statewide by 10 percent above current levels, targeting disadvantaged, low-income communities and low-canopy areas, with a preference for planting species and varieties that provide substantial carbon storage and are resilient to climate-linked stressors.

California Climate Action Plan: AB1482 - Draft 2024

Accelerate Nature-based Climate Solutions And Strengthen Climate Resilience of Natural Systems

Goal A: Increase pace and scale of nature-based climate solutions

Action 5: Increase green space and infrastructure across CA communities and prioritize tribal nations and climate vulnerable communities (pg 51)

Goal C: Integrate nature-based climate solutions into relevant infrastructure and investments

NEW—Action 6: Utilize nature-base solutions as part of cooling strategies in public and private spaces, ***including through planting trees***, expanding green space, restoring urban streams and increasing public awareness of best practices to green urban residential areas. (pg 58)

State Assembly Bill 2251: June 2022

SENATE COMMITTEE ON NATURAL RESOURCES AND WATER

Senator Henry Stern, Chair
2021 - 2022 Regular

Bill No:	AB 2251	Hearing Date:	June 20, 2022
Author:	Calderon		
Version:	May 19, 2022 Amended		
Urgency:	No	Fiscal:	Yes
Consultant:	Catherine Baxter		

Subject: Urban forestry: statewide strategic plan

Goal of AB2251's Strategic Plan

The statewide strategic plan is going to include recommendations for all of the following:

1. State and local policies necessary to achieve the goal of increasing tree canopy cover in urban areas by 10% by 2035.
2. Targets and actions for canopy increase to be completed at the regional level by 2030.
3. Local resources needed for the maintenance and upkeep of urban forests and strategies to secure these resources.
4. Resources and strategies to address threats to urban forests, including climate change, extreme weather, pollution, drought and limited water resource availability, diseases, and pests.
5. Sustainable tree canopy expansion within disadvantaged communities and low-income communities.
6. Measures to reduce or eliminate net loss of any existing tree canopy.

Coordinating Team



Walter Passmore



Jenn Yost



Matt Ritter



Jim Clark



Andrew Fricker



Igor Lacan



Jacqueline Doremus



Rachel Malarich



Ian Kesterson



Lara Roman



Natalie Van doorn



Walter Gault



Jason Johns



May Reid-Marr



Cami Pawlak



Clarissa Boyajian

CASP



What is CASP?

California's Canopy Strategy Plan (CASP) is a statewide initiative to increase tree canopy cover in urban areas by 10% by 2035 (Assembly Bill 2251). This plan is being coordinated by Cal Fire with collaboration from Cal Poly State University, San Luis Obispo. CASP provides a comprehensive roadmap for accomplishing the State's canopy cover goals.

The key components of this strategic plan include:

California Urban Forest Advisory Committee

CUFAC has been established to advise the Director of CAL FIRE on the state's Urban and Community Forestry Program

- Includes 17 industry sectors
- non-profits
- government entities
- professional organizations
- academics
- cooperative extension
- private industry

Amanda Hansen	CA Natural Resources Agency
Amos White	100K Trees 4 Humanity
Carlos Campero	LA Conservation Corps
Cindy Blain	California ReLeaf
David Cox	L.E. Cooke Company
Janet Hartin	UC Cooperative Extension
Jimmie Webb	San Diego Gas & Electric
Jonathon T Swae	City of San Francisco
Julie Saare-Edmonds	CA Dept. of Water Resources
Rose Epperson	Western Chapter ISA
Sandy Bonilla - Chair	Urban Conservation Corps
Sara Davis	City of San Jose, Dept. of Transportation
Tracey Takeuchi	Cal Poly, Pomona
Vince Mikulanic	Davey Resource Group
Francisco Escobedo	USDA Forest Service
Miranda Hutten	USDA Forest Service Region 5
Gabriella Armendariz	CAL FIRE Urban & Community Forestry
Tanner Mar	CAL FIRE Urban & Community Forestry
Evan Jones	CAL FIRE Urban & Community Forestry
Julia Gowin	CAL FIRE Urban & Community Forestry
Jessica Casa	CAL FIRE Urban & Community Forestry
Greg Dion	CAL FIRE Urban & Community Forestry
Henry Herrera	CAL FIRE Urban & Community Forestry
Marco DeAnda	CAL FIRE Urban & Community Forestry
Walter Passmore	CAL FIRE Urban & Community Forestry

California Urban Forest Advisory Committee

CUFAC has been established to advise the Director of CAL FIRE on the state's Urban and Community Forestry Program

**California Urban Forest Advisory Committee
CAL FIRE Urban & Community Forestry Program
STRATEGIC PLAN 2019-2024**

MISSION
The mission of the California Department of Forestry and Fire Protection (CAL FIRE) is to serve and safeguard the people and protect the property and resources of California.

U&CF VISION
CAL FIRE envisions urban and community forests that are healthy, extensive, and well-managed, providing a wide array of optimal benefits to all Californians.

- Optimize the benefits people receive from urban & community forests
 - A. Increase awareness of the value of urban forests for all Californians.
 - B. Make available urban forestry resources to local decision-makers and the public.
 - C. Encourage local decision-makers to consider urban forests to be essential community infrastructure and to fund perpetual maintenance.
 - D. Ensure recognition of U&CF staff as a primary resource for urban forestry information, outreach, & technical assistance.
- Strengthen the urban forest industry workforce
 - A. Promote the importance of urban forestry related jobs and the benefits of professional standards.
 - B. Foster diversity in the urban forest workforce.
 - C. Communicate the contribution of U&CF industry jobs to the California economy.
 - D. Promote urban forests as a critical resource and essential infrastructure that requires continual maintenance.
 - E. Advance innovation and leadership in the urban forest industry.
- Improve the health and management of the urban forest
 - A. Champion effective management of urban forests.
 - B. Promote the highest standards of tree care based on best available science and practice.
 - C. Increase the resilience of urban forests to climate change, environmental effects, and resource limitations.
 - D. Advance practices and policies that optimize the health and management of urban forests.
 - E. Establish or enhance existing statewide key performance measures for the health and management of urban forests.

CAPS Engagement Plan 2024-2025

- Nov 13/14 - CUFC meeting
- Dec 3/4 - CUFAC meeting
- City interviews ongoing
- Draft review webinars & updates from CaUFC, ReLeaf
- March Draft policies available for review
- Revision and review period
- Currently due to state legislature on June 30, 2025
 - Likely year extension is pending

Expanding canopy in disadvantaged communities

Table 17. California Disadvantaged Communities Percent Tree Canopy in Urban Areas.

Urban Tree Canopy Cover	Disadvantaged (25.3 Percent of all tracts)		Non-Disadvantaged (74.7 percent of all tracts)	
	Number of Census Tracts	Percent of Disadvantaged Tracts	Number of Census Tracts	Percent of Non-Disadvantaged Tracts
<10 percent	1,498	75.8	2,244	38.5
10-20 percent	406	20.5	2,172	37.3
>20 percent	72	3.6	1,407	24.2
Total Number of Tracts	1,976	100	5,823	100

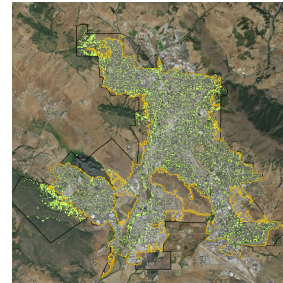
Strategic Plan Workshop



Canopy cover increase by 10%

- 10% increase from 2018 levels

Current Canopy (km sq.)	10% of Current (km sq.)	2035 Canopy (km sq.)	Number of Mature Trees
4.09	0.40	4.49	5,000

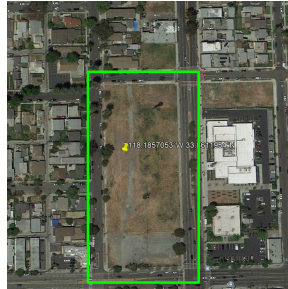
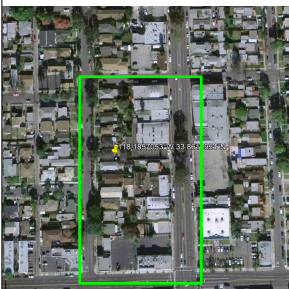


Canopy Loss in Long Beach, CA

2003

2019

2024



Plan for foundational resources

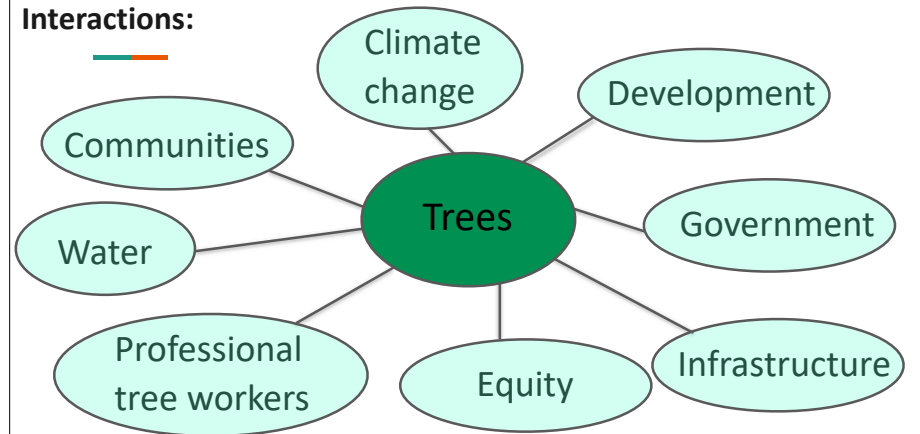
- Geospatial resources for city planning
- Goals and targets for cities
- The skilled workforce to support these goals
- Methods for tracking change through time

What increases canopy?



1. Limit removal of canopy
2. Grow existing trees
3. Plant new trees

Interactions:



Identified Challenges

- Development/housing with no room for trees
- Removals of large species with replacement of small species
- Water use considerations
- Insurance companies
- Conflict with other regulatory requirements - ADA accessibility, sidewalk engineering standards, etc.
- City staffing and capability - largely under-resourced
 - Pruning cycles vary from 2 yrs to non-existent

Ian Kesterson - City of Berkeley

CITY OF BERKELEY

Housing Authority Public Library Rent Board School District

City Services Community & Recreation Safety & Health Construction & Development Doing Business Your Government

Community & Recreation > News > Get a tree in front of your home or business – or help plant one

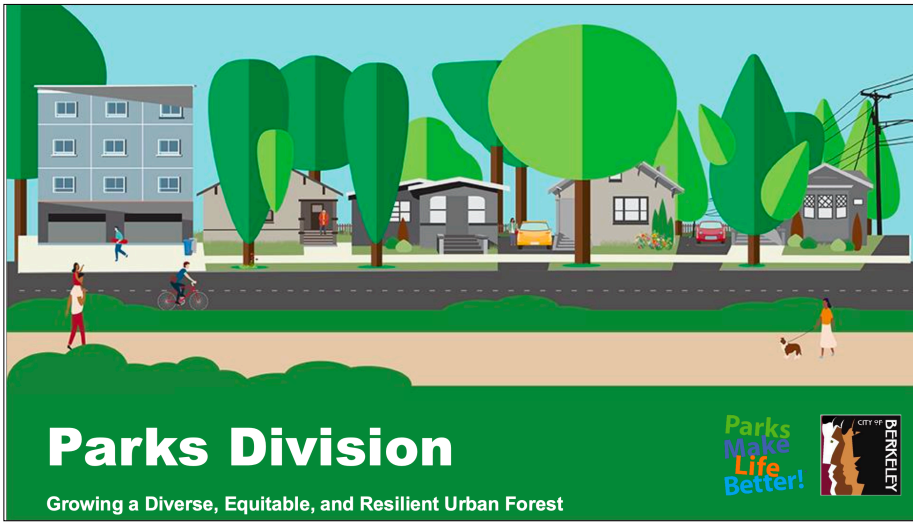
Share Print

City offices and facilities are closed Monday, November 11 for Veteran's Day.

Parks & Recreation

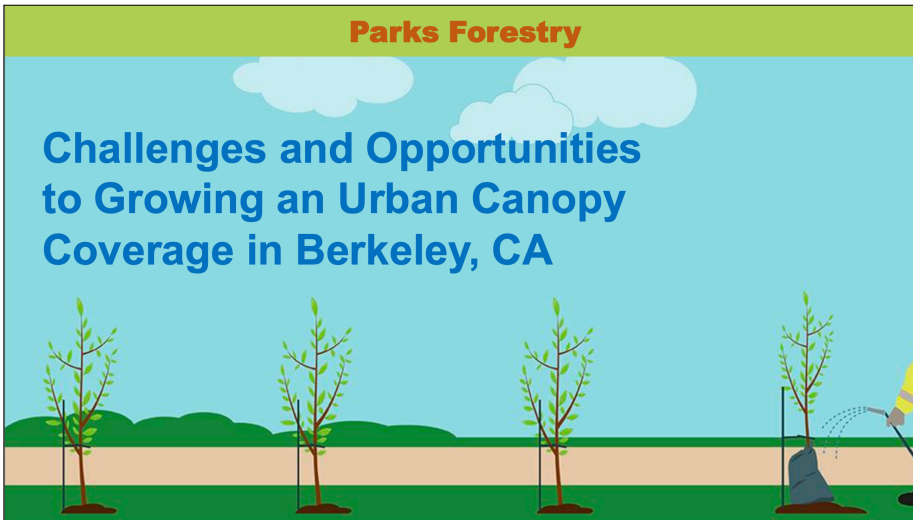
Get a tree in front of your home or business – or help plant one

Join others to help plant trees at San Pablo Park on April 30



Public

Ian Kesterson-
ikesterson@berkeleyca.gov
Urban Forester and
Tree Planting Supervisor

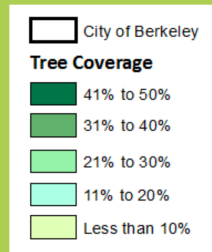
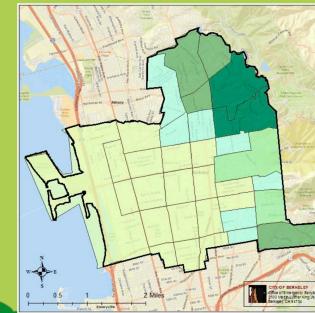


The Urban Forest is a complicated urban/ecosystem



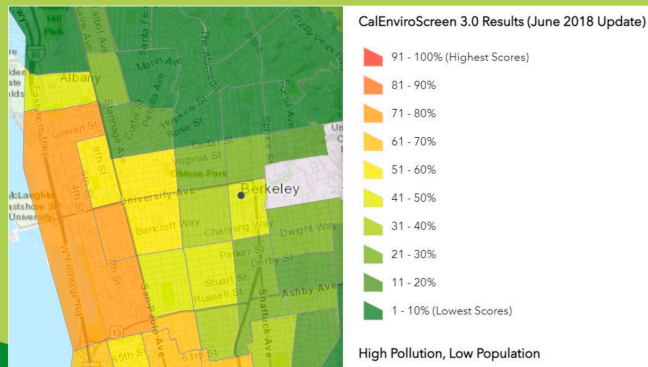
Berkeley Tree Canopy Coverage

The first step in choosing where to plant a tree is to identify areas with fewer trees



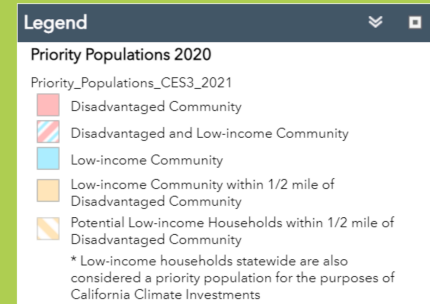
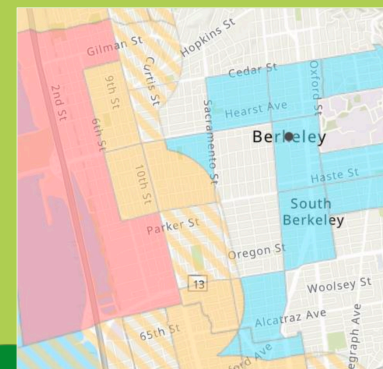
Environmental Impact in Berkeley

Then identify the areas with poorer environmental quality



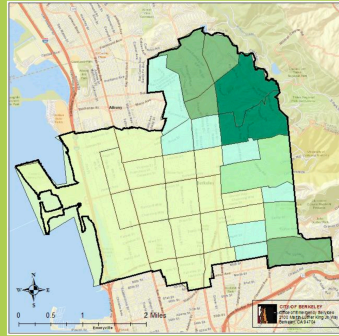
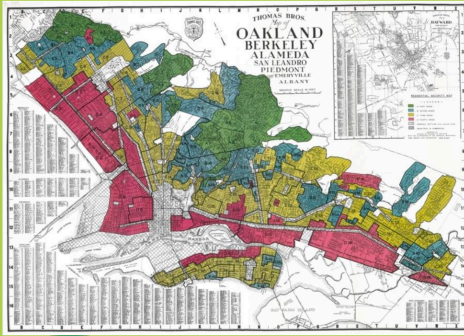
Environmental Impact and Income Levels

Further dial in areas of need with income levels



Recognize Redlining Areas

The urban forest canopy cover matches these zones



Urban Street Tree Inventory

Identifying our open planting locations

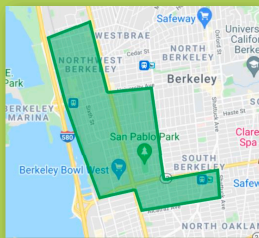


Green Dots: Trees

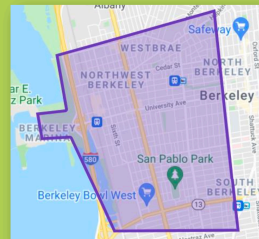
Orange Dots: Potential Planting Locations

Grant Funded Project Locations

Different project areas based on state bill that provides the funding



Urban Greening: now-2025



EEM: 2022-2025. Included Aquatic Park and urban areas west of MLK

Taking a site-specific view:

A water gum in a standard street site



Tree Species Selection:



An updated selection:

They look like trees!

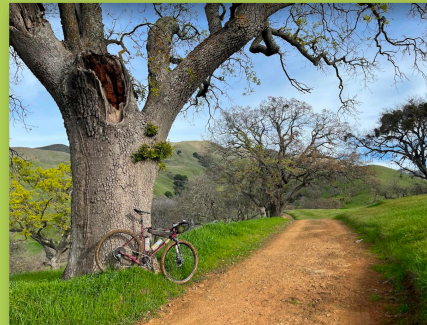


Big awesome trees need big awesome spaces.

Wild spaces need time and cultural appreciation. Build and utilize those sites with the appropriate species when available. Plan accordingly when working with the leftover and limited spaces.



Tree Species Selection:



**We've messed up before,
we'll mess up again.**

- Build in resiliency, grow in sustainable sites, develop biosecurity.
- Species diversity is an asset.
- Think in tree time. They can't move and if done right, they stay around for a while.
- Mimic nature. In nature different signals and tropisms affect tree growth. Plan for non-evolved challenges of traffic and infrastructure, and unknown futures.



Learning from Legacy Trees:



**People matter and are a critical
element to the process.**

Where we plant, the people our trees affect, and our methods of engagement all matter and change the long-term growth of a tree and the urban forest.



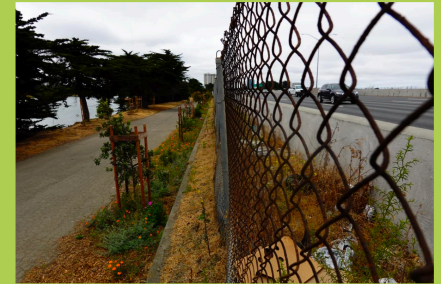
Aquatic Park Westside:



Aquatic Park Westside:



Aquatic Park Westside:



Aquatic Park Westside:



Aquatic Park Westside: Natives and Beyond!

- ~1200 new trees, shrubs, and plants
- Coast live oak
- California buckeye
- Toyon
- Bigleaf maple
- California sycamore
- Western redbud
- Pacific wax myrtle, coffee berry, and lemonade berry
- Catalina ironwood
- Catalina cherry
- Torrey pine

Supporting species:

- New Zealand Christmas, red flowering gum, water gum
- Island oak, silverleaf oak, Canby oak



Public

Aquatic Park Westside:



Public

Trees take time to mature, but still provide immediate impact



Public

2023: Internship- Growing the Future



Thanks for your support!

- The Urban Forest is a complex system
- Growing sites and building community support is our next step
- Building resilience in our urban forest is a constant goal and never-ending challenge
- Big trees need big spaces!
- Find your team where you can. You can't do it alone!

Parks
Make
Life
Better!



Contribute to CASP in two ways:

CITIES:



General input here:



Challenges

Are you here representing a...

- city
- community group
- professional tree worker/arborist
- other

Challenges

Is your canopy....

- increasing
- decreasing
- staying the same

Challenges

What is driving that change in the community?

Name - affiliation - comment

Opportunities

What ideas do you think should be reflected in the strategic plan?

Name - affiliation - comment

Opportunities

What would you need to add 10% canopy to your community?

Name - affiliation - comment

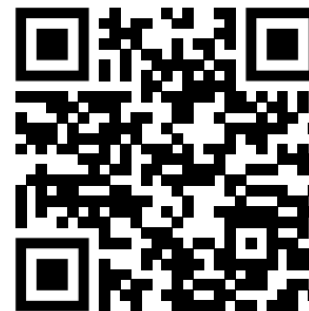
Challenges

How should it be paid for?
\$\$\$\$

Name - affiliation - comment

Contribute to CASP in two ways:

CITIES:



General input here:





CASP: California's Strategic Plan to increase canopy

Addressing AB 2251



CAL POLY



UFEI

