

Tree Planting Guide



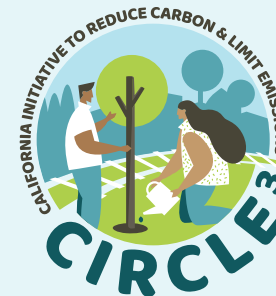
1. Hole Width: Dig a hole about 2 to 3 times wider than the tree container (depending on the space available).

2. Hole depth: The hole depth should allow the root collar to be 1 to 2 inches above the surrounding soil to allow for settlement.

3. Build a berm (of compost/mulch if available) four inches tall around the top of the root collar and compact berm. Keep compost/mulch 6 inches away from tree trunk.

4. Back fill the hole with half native soil and half compost/mulch (if available). If no compost/mulch is available, backfill entire hole with the native soil.

5. Water the tree immediately after planting.



The **California Initiative to Reduce Carbon & Limit Emissions 3.0** (CIRCLE) is working along the High Speed Rail corridor with partner cities and non-profits to engage residents in disadvantaged communities, train a CA Tree Team, and plant trees.

